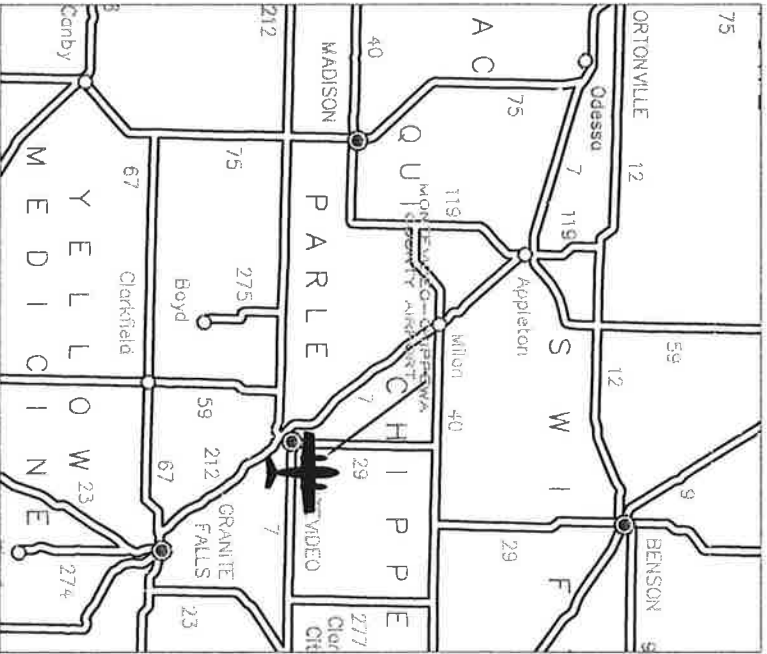


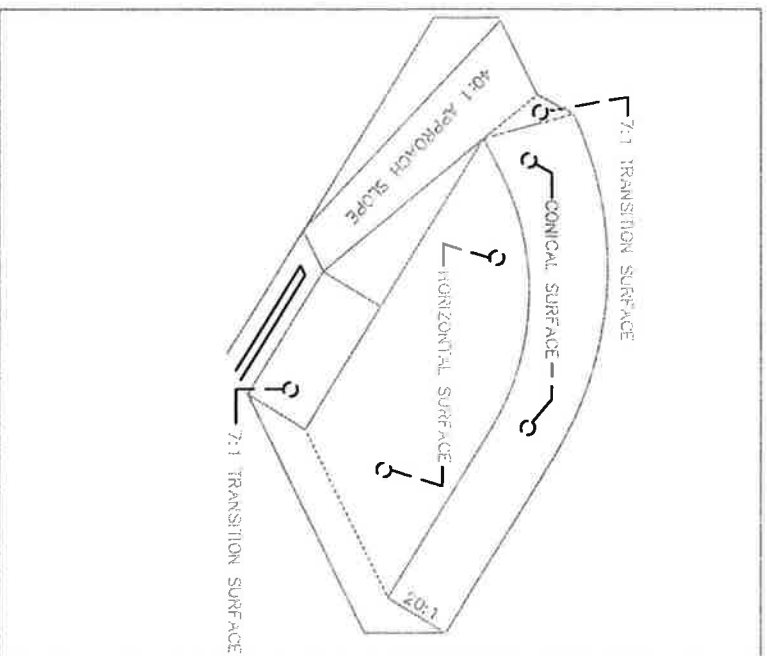
AIRPORT ZONING PLAN MONTEVIDEO-CHIPPEWA COUNTY AIRPORT MONTEVIDEO, MINNESOTA



LOCATION MAP



MAGNETIC DECLINATION - 1.48° E
SOURCE: GEOMAGNETIC INFORMATION CENTER,
USGS, MAY 11, 1998



IMAGINARY SURFACES

APPROVED	DATE
CITY CLERK	DATE
APPROVED	DATE
APPROVED	DATE
APPROVED	DATE

TITLE SHEET

MONTEVIDEO-CHIPPEWA COUNTY AIRPORT

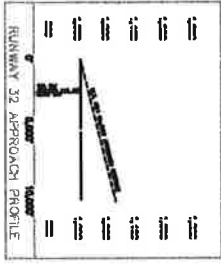
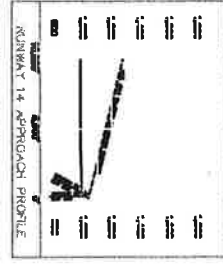
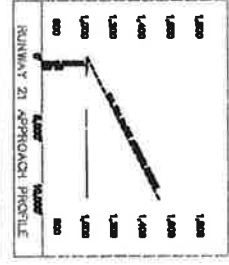
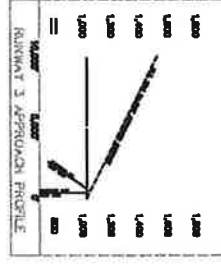
SEPH
Sustainable Environmental Planning

DATE: 0 / 00

SHEET 1 OF 3



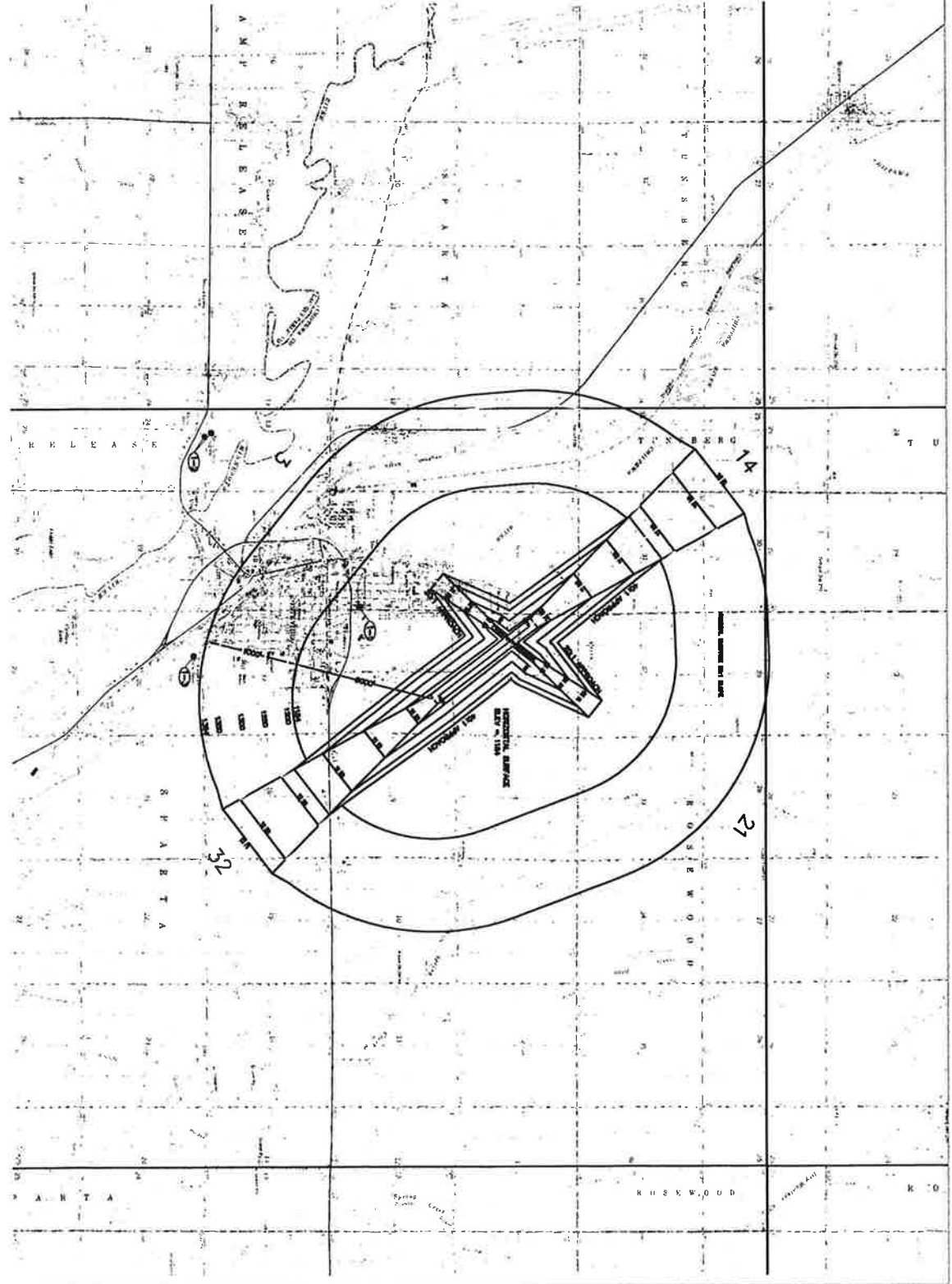
GRAPHIC SCALE IN FEET
 0 2000 4000 6000



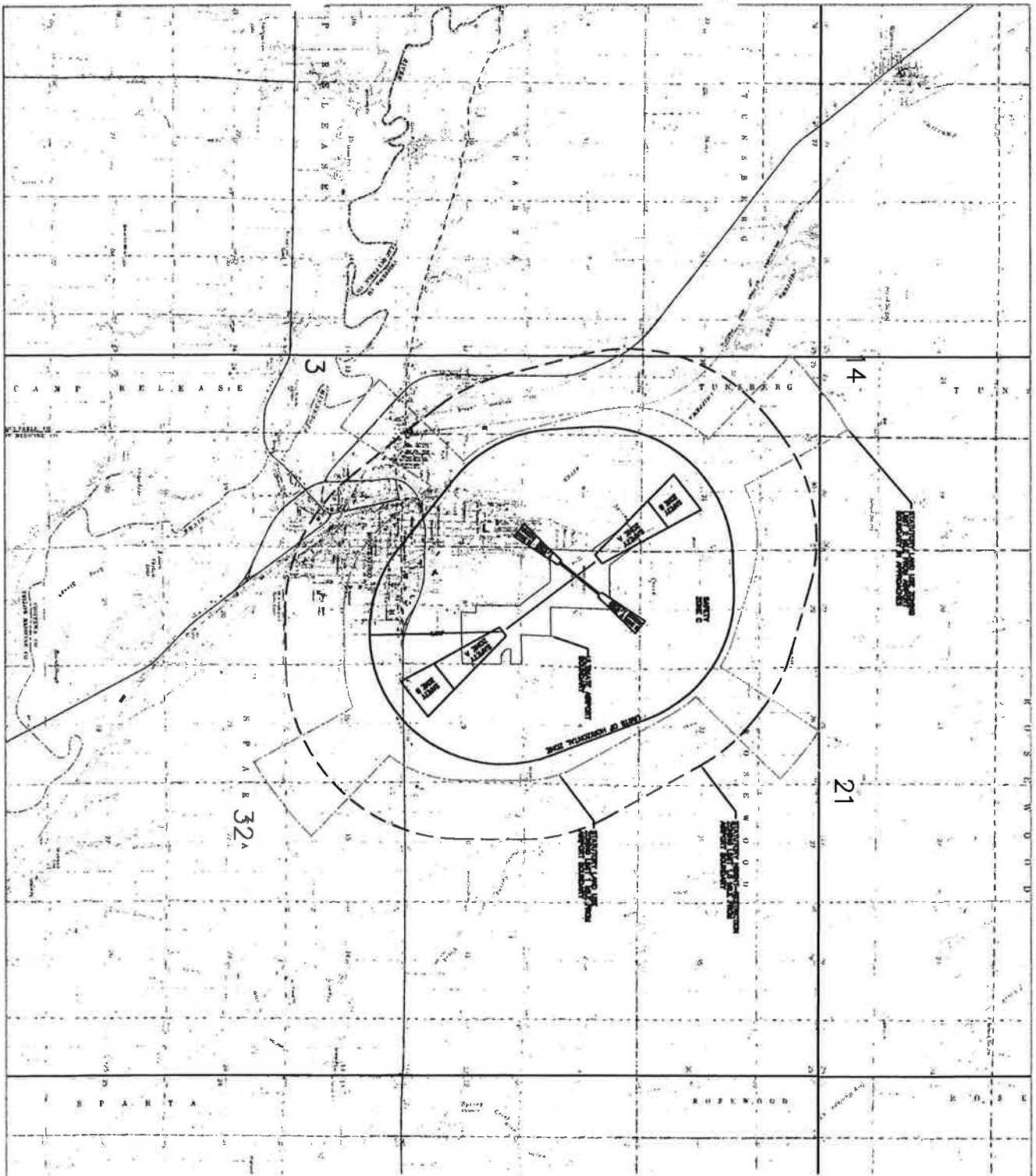
NO.	FROM	TO	TYPE	CLASS
1	100'	100'	Obstruction	1
2	100'	100'	Obstruction	1
3	100'	100'	Obstruction	1
4	100'	100'	Obstruction	1
5	100'	100'	Obstruction	1
6	100'	100'	Obstruction	1
7	100'	100'	Obstruction	1
8	100'	100'	Obstruction	1
9	100'	100'	Obstruction	1
10	100'	100'	Obstruction	1
11	100'	100'	Obstruction	1
12	100'	100'	Obstruction	1
13	100'	100'	Obstruction	1
14	100'	100'	Obstruction	1
15	100'	100'	Obstruction	1
16	100'	100'	Obstruction	1
17	100'	100'	Obstruction	1
18	100'	100'	Obstruction	1
19	100'	100'	Obstruction	1
20	100'	100'	Obstruction	1
21	100'	100'	Obstruction	1
22	100'	100'	Obstruction	1
23	100'	100'	Obstruction	1
24	100'	100'	Obstruction	1
25	100'	100'	Obstruction	1
26	100'	100'	Obstruction	1
27	100'	100'	Obstruction	1
28	100'	100'	Obstruction	1
29	100'	100'	Obstruction	1
30	100'	100'	Obstruction	1
31	100'	100'	Obstruction	1
32	100'	100'	Obstruction	1
33	100'	100'	Obstruction	1
34	100'	100'	Obstruction	1
35	100'	100'	Obstruction	1
36	100'	100'	Obstruction	1
37	100'	100'	Obstruction	1
38	100'	100'	Obstruction	1
39	100'	100'	Obstruction	1
40	100'	100'	Obstruction	1
41	100'	100'	Obstruction	1
42	100'	100'	Obstruction	1
43	100'	100'	Obstruction	1
44	100'	100'	Obstruction	1
45	100'	100'	Obstruction	1
46	100'	100'	Obstruction	1
47	100'	100'	Obstruction	1
48	100'	100'	Obstruction	1
49	100'	100'	Obstruction	1
50	100'	100'	Obstruction	1

SCHEDULE OF OBSTRUCTIONS

NO.	DESCRIPTION	ELEVATION IN FEET	CLASSIFICATION	DATE
1	Obstruction	100'	1	1/1/19
2	Obstruction	100'	1	1/1/19
3	Obstruction	100'	1	1/1/19
4	Obstruction	100'	1	1/1/19
5	Obstruction	100'	1	1/1/19
6	Obstruction	100'	1	1/1/19
7	Obstruction	100'	1	1/1/19
8	Obstruction	100'	1	1/1/19
9	Obstruction	100'	1	1/1/19
10	Obstruction	100'	1	1/1/19
11	Obstruction	100'	1	1/1/19
12	Obstruction	100'	1	1/1/19
13	Obstruction	100'	1	1/1/19
14	Obstruction	100'	1	1/1/19
15	Obstruction	100'	1	1/1/19
16	Obstruction	100'	1	1/1/19
17	Obstruction	100'	1	1/1/19
18	Obstruction	100'	1	1/1/19
19	Obstruction	100'	1	1/1/19
20	Obstruction	100'	1	1/1/19
21	Obstruction	100'	1	1/1/19
22	Obstruction	100'	1	1/1/19
23	Obstruction	100'	1	1/1/19
24	Obstruction	100'	1	1/1/19
25	Obstruction	100'	1	1/1/19
26	Obstruction	100'	1	1/1/19
27	Obstruction	100'	1	1/1/19
28	Obstruction	100'	1	1/1/19
29	Obstruction	100'	1	1/1/19
30	Obstruction	100'	1	1/1/19
31	Obstruction	100'	1	1/1/19
32	Obstruction	100'	1	1/1/19
33	Obstruction	100'	1	1/1/19
34	Obstruction	100'	1	1/1/19
35	Obstruction	100'	1	1/1/19
36	Obstruction	100'	1	1/1/19
37	Obstruction	100'	1	1/1/19
38	Obstruction	100'	1	1/1/19
39	Obstruction	100'	1	1/1/19
40	Obstruction	100'	1	1/1/19
41	Obstruction	100'	1	1/1/19
42	Obstruction	100'	1	1/1/19
43	Obstruction	100'	1	1/1/19
44	Obstruction	100'	1	1/1/19
45	Obstruction	100'	1	1/1/19
46	Obstruction	100'	1	1/1/19
47	Obstruction	100'	1	1/1/19
48	Obstruction	100'	1	1/1/19
49	Obstruction	100'	1	1/1/19
50	Obstruction	100'	1	1/1/19



Mn/DOT IMAGINARY SURFACES DRAWING
 MONTEVIDEO-CHIPPEWA COUNTY AIRPORT



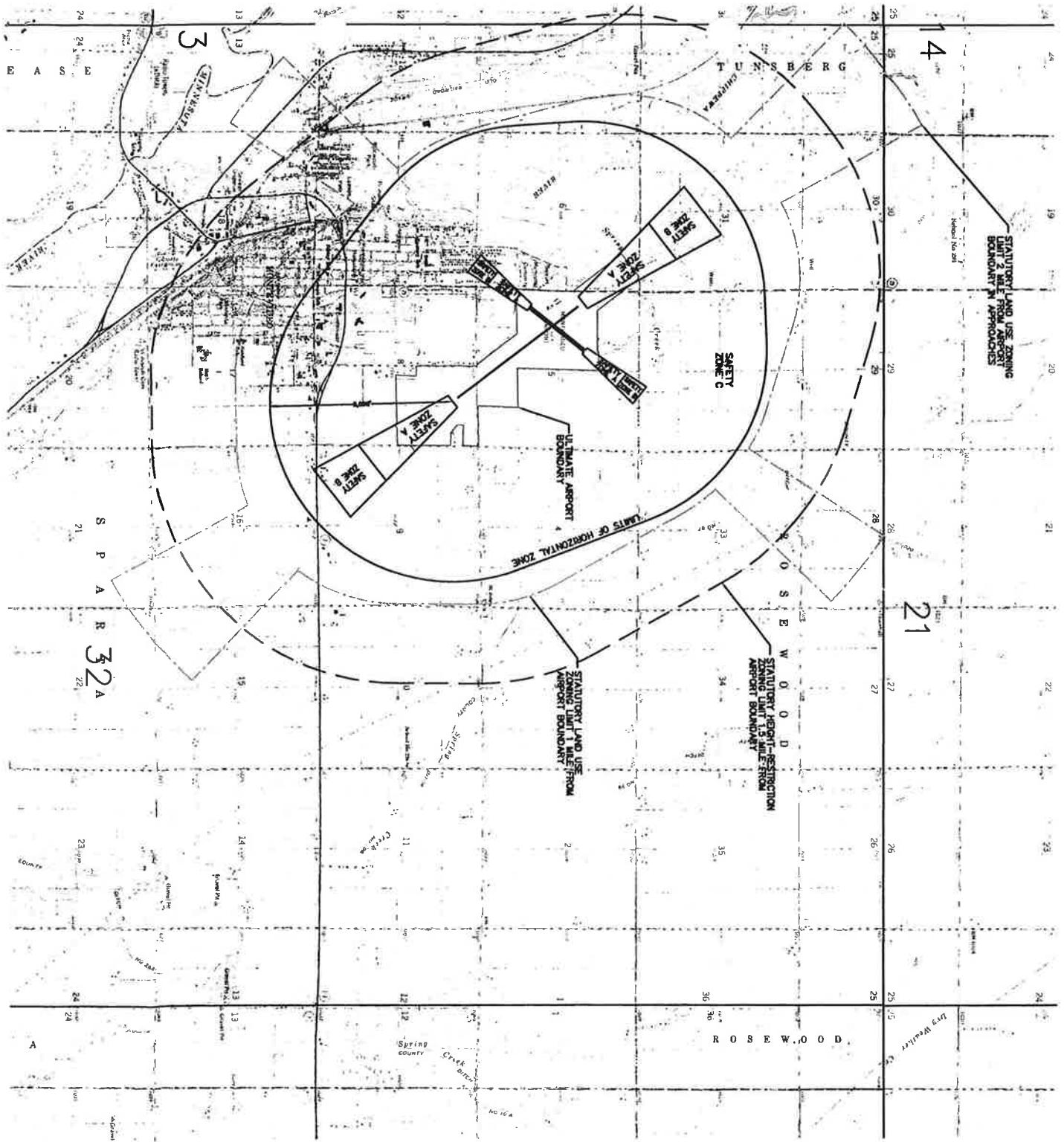
MAGNETIC DECLINATION = 4.7° E
 SOURCE: TERN DATA GEOMETRICAL CHART,
 JULY 12, 2001
 GRAPHIC SCALE IN FEET
 0 2000 4000 6000
 IN, FT DATE REVISION CHANGE



THIS DRAWING IS THE PROPERTY OF THE STATE OF MINNESOTA AND IS LOANED TO YOU BY THE MINNESOTA DEPARTMENT OF TRANSPORTATION. IT IS TO BE USED ONLY FOR THE PURPOSES AUTHORIZED BY THE LOAN AGREEMENT. IT IS NOT TO BE REPRODUCED, COPIED, OR TRANSMITTED IN ANY FORM OR BY ANY MEANS, ELECTRONIC OR MECHANICAL, INCLUDING PHOTOCOPYING, RECORDING, OR BY ANY INFORMATION STORAGE AND RETRIEVAL SYSTEM, WITHOUT THE WRITTEN PERMISSION OF THE MINNESOTA DEPARTMENT OF TRANSPORTATION. ANY UNAUTHORIZED REPRODUCTION OR USE OF THIS DRAWING IS PROHIBITED AND WILL BE SUBJECT TO LEGAL ACTION.

Mn/DOT LAND USE DRAWING
 MONTEVIDEO-CHIPPEWA COUNTY AIRPORT





General Restrictions

No use shall be made of any land in any of the safety zones which creates or causes interference with the operation of radio or electronic facilities on the airport or with radio or electronic facilities in the vicinity of the airport. No use shall be made of any land in any of the safety zones which creates or causes interference with the operation of radio or electronic facilities in the vicinity of the airport. No use shall be made of any land in any of the safety zones which creates or causes interference with the operation of radio or electronic facilities in the vicinity of the airport. No use shall be made of any land in any of the safety zones which creates or causes interference with the operation of radio or electronic facilities in the vicinity of the airport.

Safety Zone "A"

Buildings, temporary structures, exposed transmission lines, or other aerial land use structures, towers, and shall be restricted to those uses which will not create, attract, or bring together an assembly of persons thereon. Permitted uses may include, but are not limited to, such uses as agriculture (seasonal crops), horticulture, raising of livestock, ornamental nurseries, wildlife habitat, light outdoor recreation (golf courses), cemeteries, and other parks.

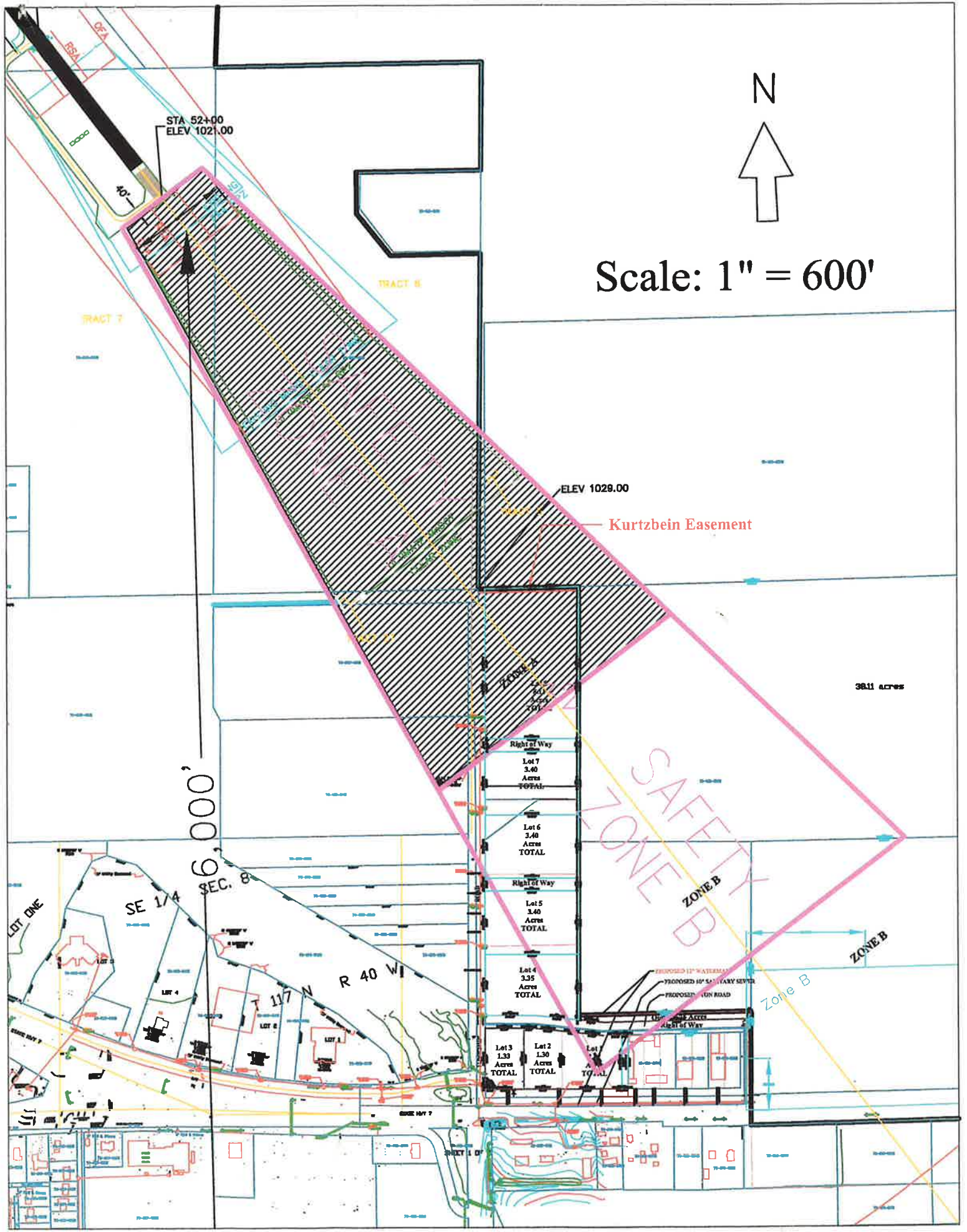
Safety Zone "B"

Each use shall be on a site whose area shall not be less than three acres. Each use shall not create, attract, or bring together a site population that would exceed 10 times that of the site average. Each site shall not exceed 10 times that of the site average. Each site shall not exceed 10 times that of the site average. Each site shall not exceed 10 times that of the site average.

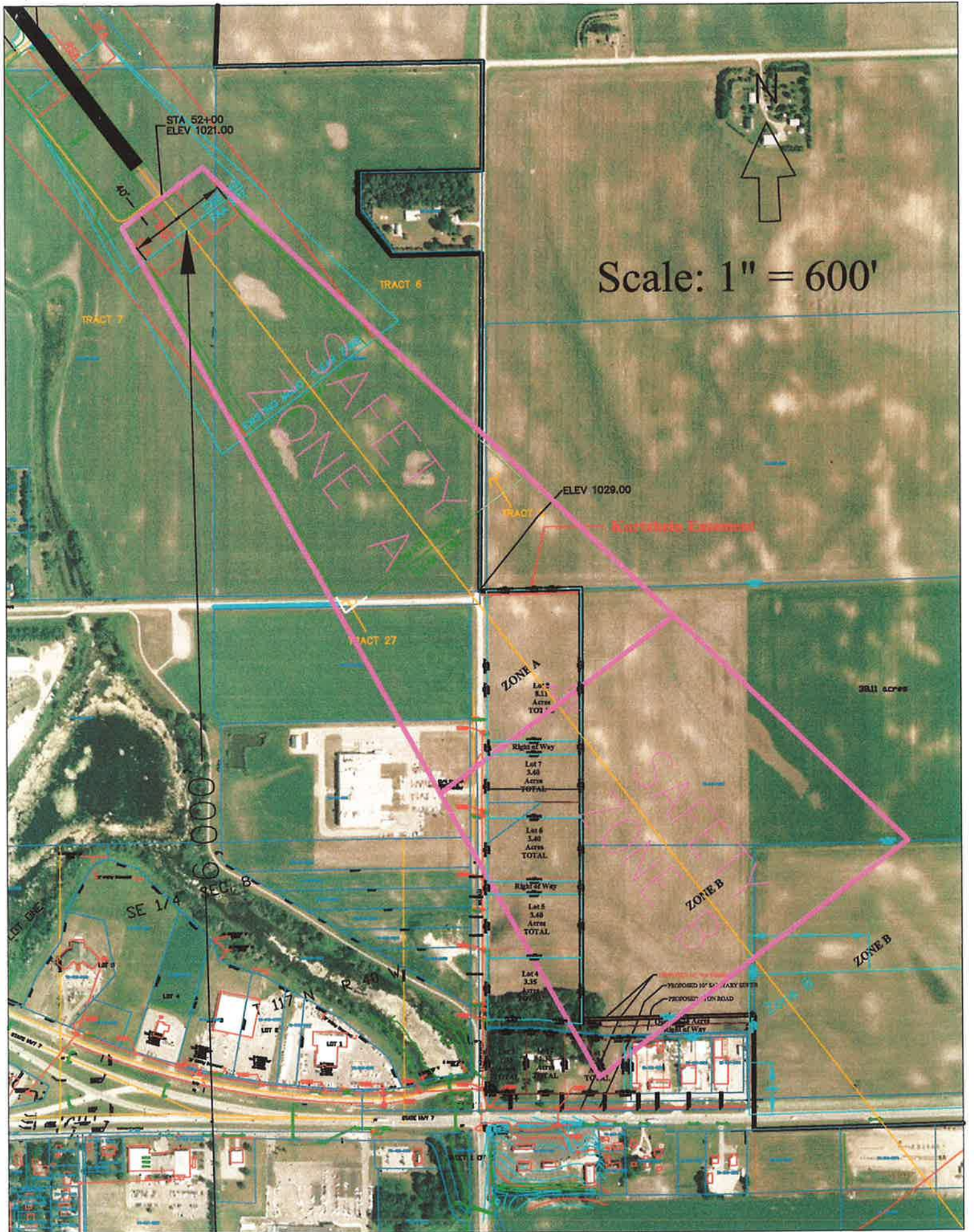
Safety Zone "C"

Subject only to the general restrictions, Safety Zone "C" is enclosed within the perimeter of the horizontal zone.





Scale: 1" = 600'



STA 52+00
ELEV 1021.00

TRACT 6

TRACT 7

TRACT 27

ELEV 1029.00

Scale: 1" = 600'

ZONE A

ZONE B

ZONE B

38.11 acres

Lot 2
8.11
Acres
TOTAL

Right of Way
Lot 7
3.50
Acres
TOTAL

Lot 6
3.40
Acres
TOTAL

Right of Way
Lot 5
3.40
Acres
TOTAL

Lot 4
3.25
Acres
TOTAL

Lot 3
3.15
Acres
TOTAL

Lot 2
3.10
Acres
TOTAL

Lot 1
3.05
Acres
TOTAL

Lot 0
3.00
Acres
TOTAL

Lot 0
3.00
Acres
TOTAL

Lot 0
3.00
Acres
TOTAL

PROPOSED 15' SIDEWALKS
PROPOSED 10' ROAD
PROPOSED 20' SIDEWALKS
PROPOSED 20' ROAD

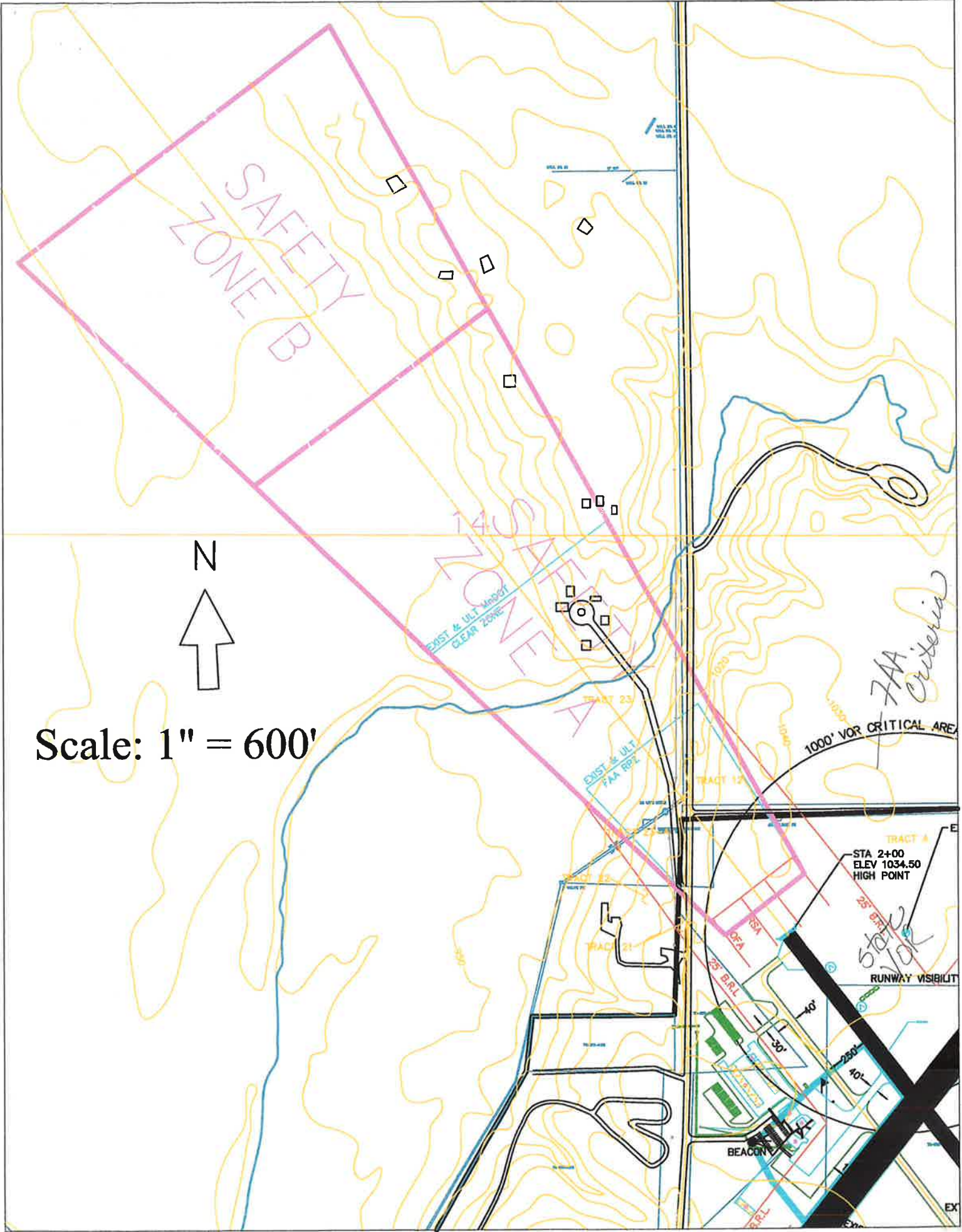
PROPOSED 15' SIDEWALKS
PROPOSED 10' ROAD
PROPOSED 20' SIDEWALKS
PROPOSED 20' ROAD

PROPOSED 15' SIDEWALKS
PROPOSED 10' ROAD
PROPOSED 20' SIDEWALKS
PROPOSED 20' ROAD

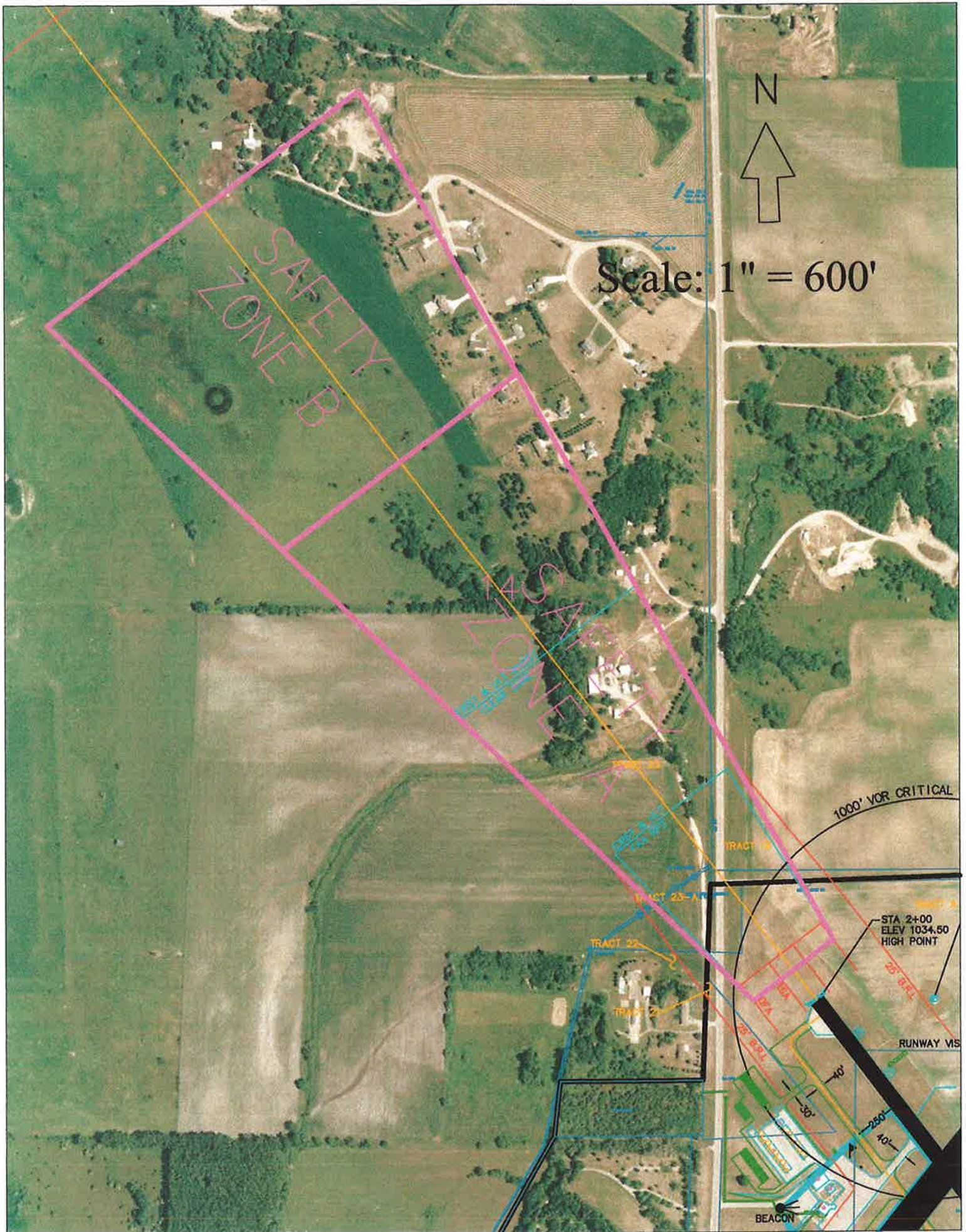
PROPOSED 15' SIDEWALKS
PROPOSED 10' ROAD
PROPOSED 20' SIDEWALKS
PROPOSED 20' ROAD

PROPOSED 15' SIDEWALKS
PROPOSED 10' ROAD
PROPOSED 20' SIDEWALKS
PROPOSED 20' ROAD

PROPOSED 15' SIDEWALKS
PROPOSED 10' ROAD
PROPOSED 20' SIDEWALKS
PROPOSED 20' ROAD

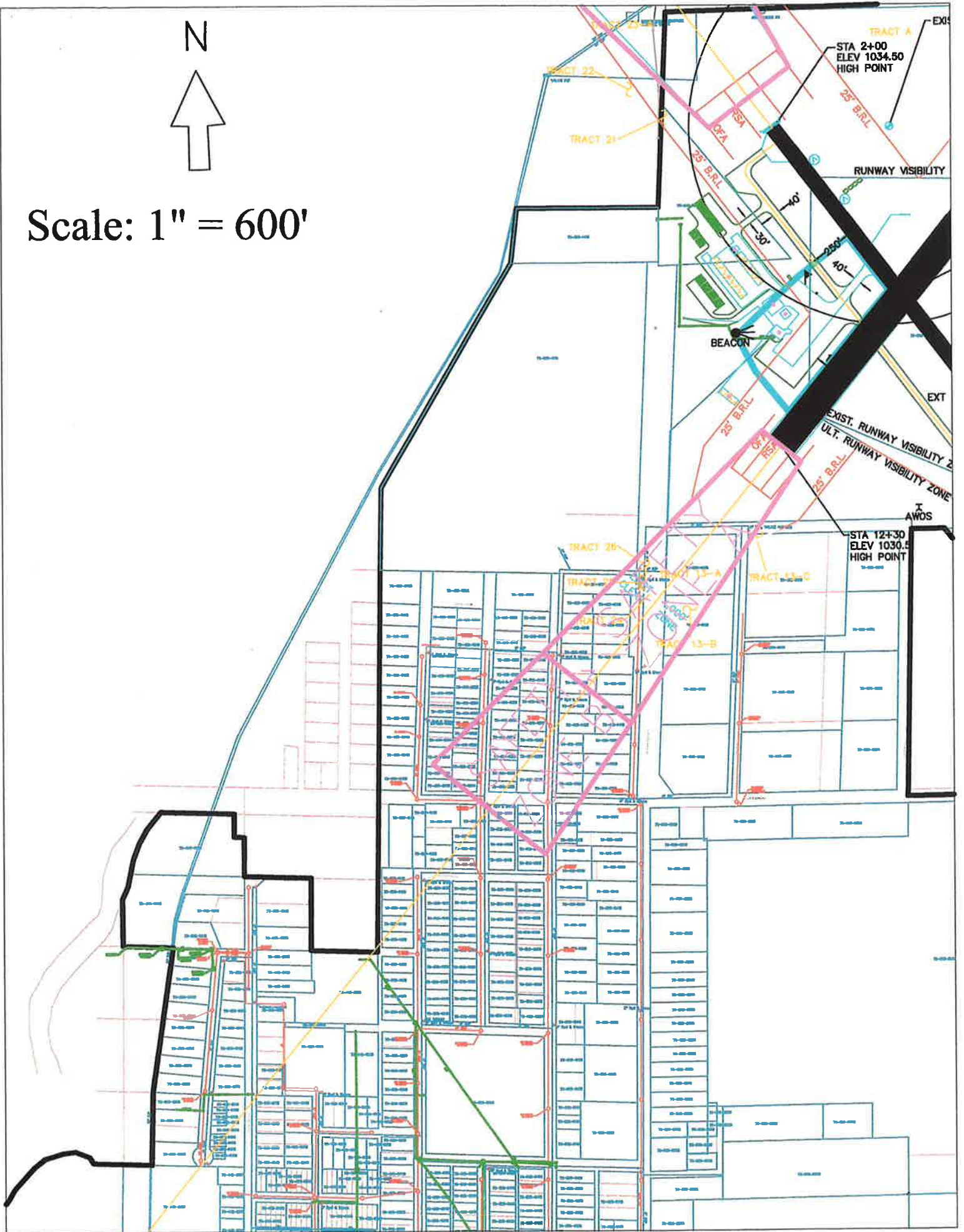


Scale: 1" = 600'



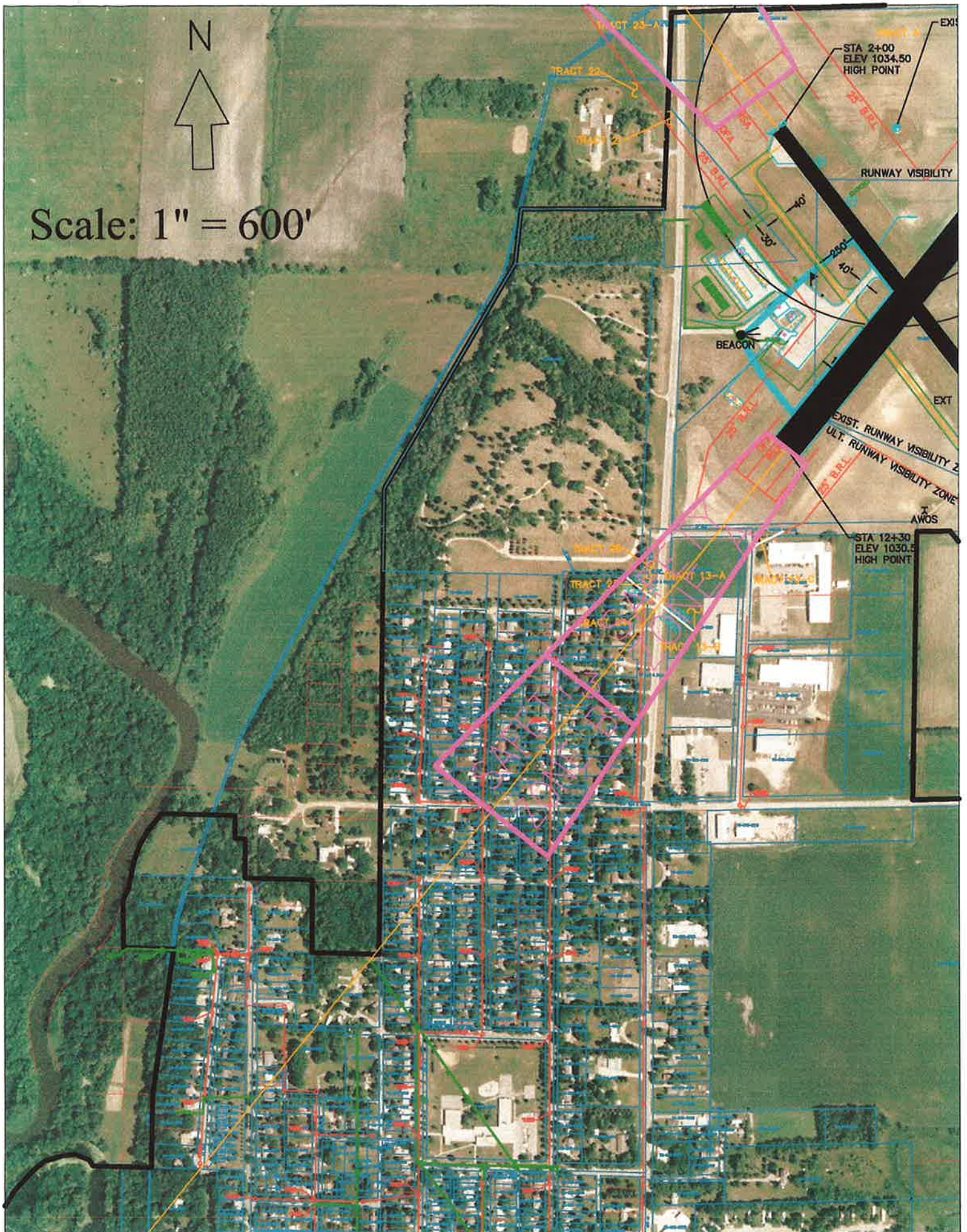


Scale: 1" = 600'

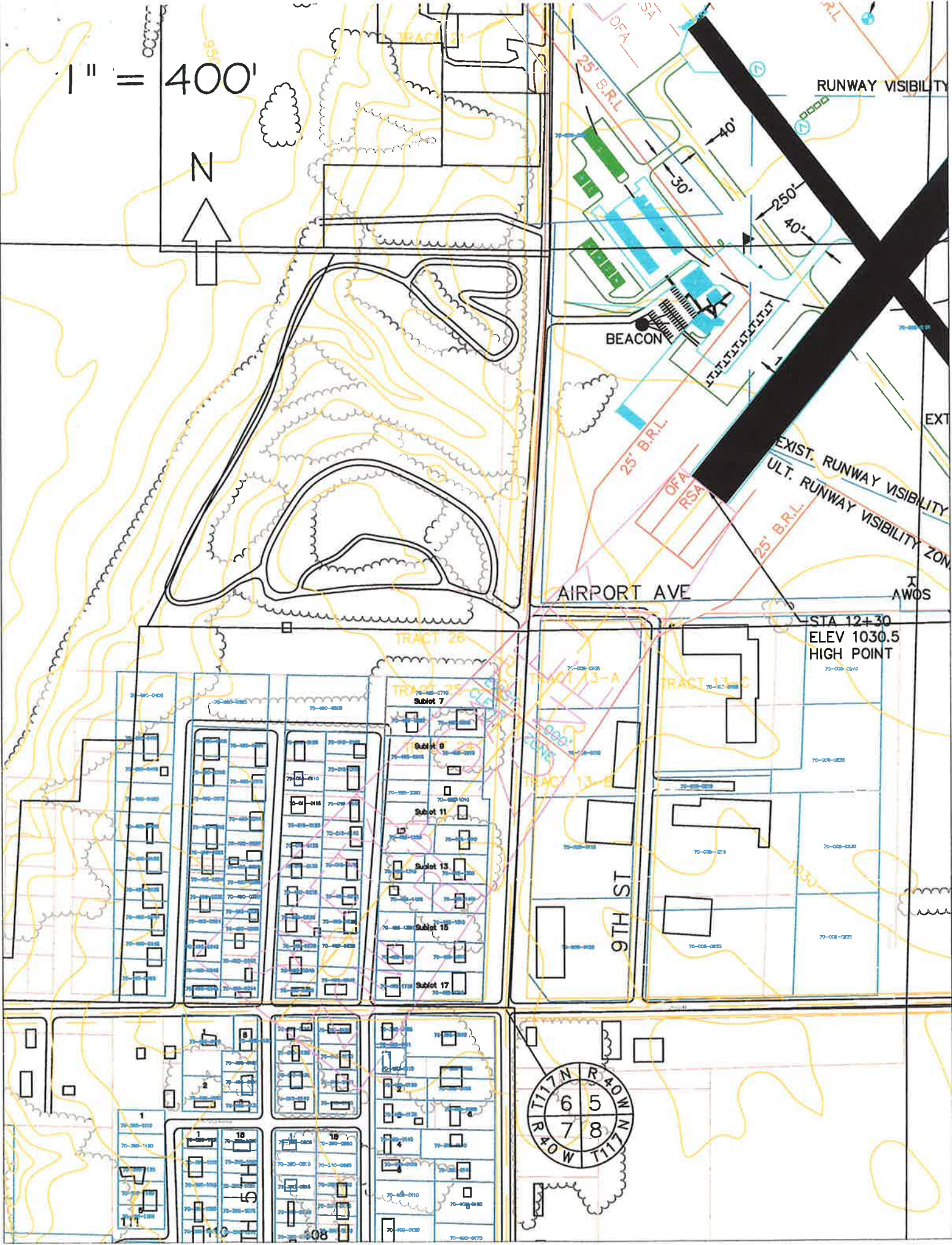




Scale: 1" = 600'



1" = 400'



RUNWAY VISIBILITY

BEACON

AIRPORT AVE

9TH ST

STA 12+30
ELEV 1030.5
HIGH POINT



1" = 400'



RUNWAY VISIBILITY

BEACON



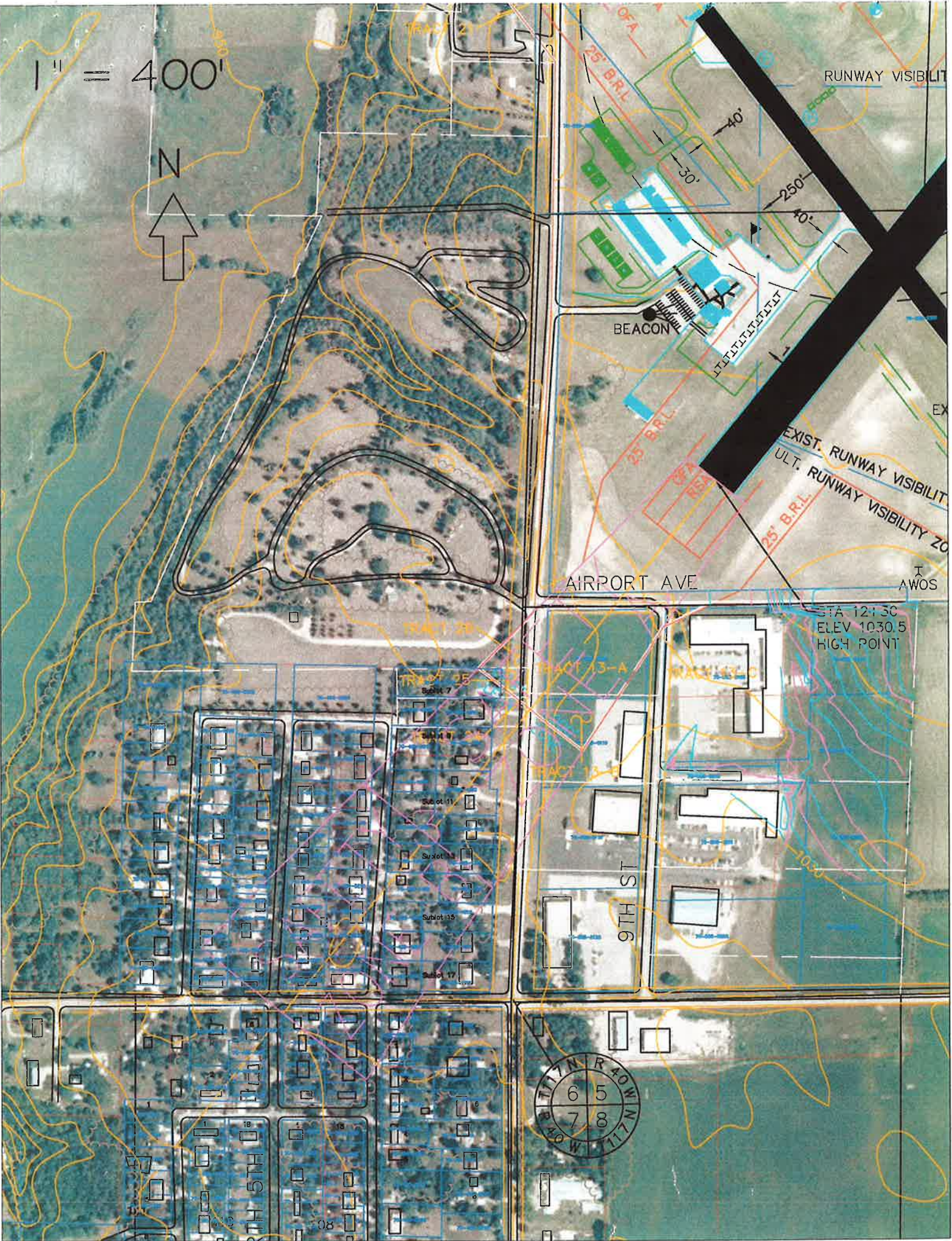
ULT. RUNWAY VISIBILITY ZONE

AIRPORT AVE

AWOS

STA 12+30
ELEV 1030.5
HIGH POINT

9TH ST





Scale: 1" = 600'

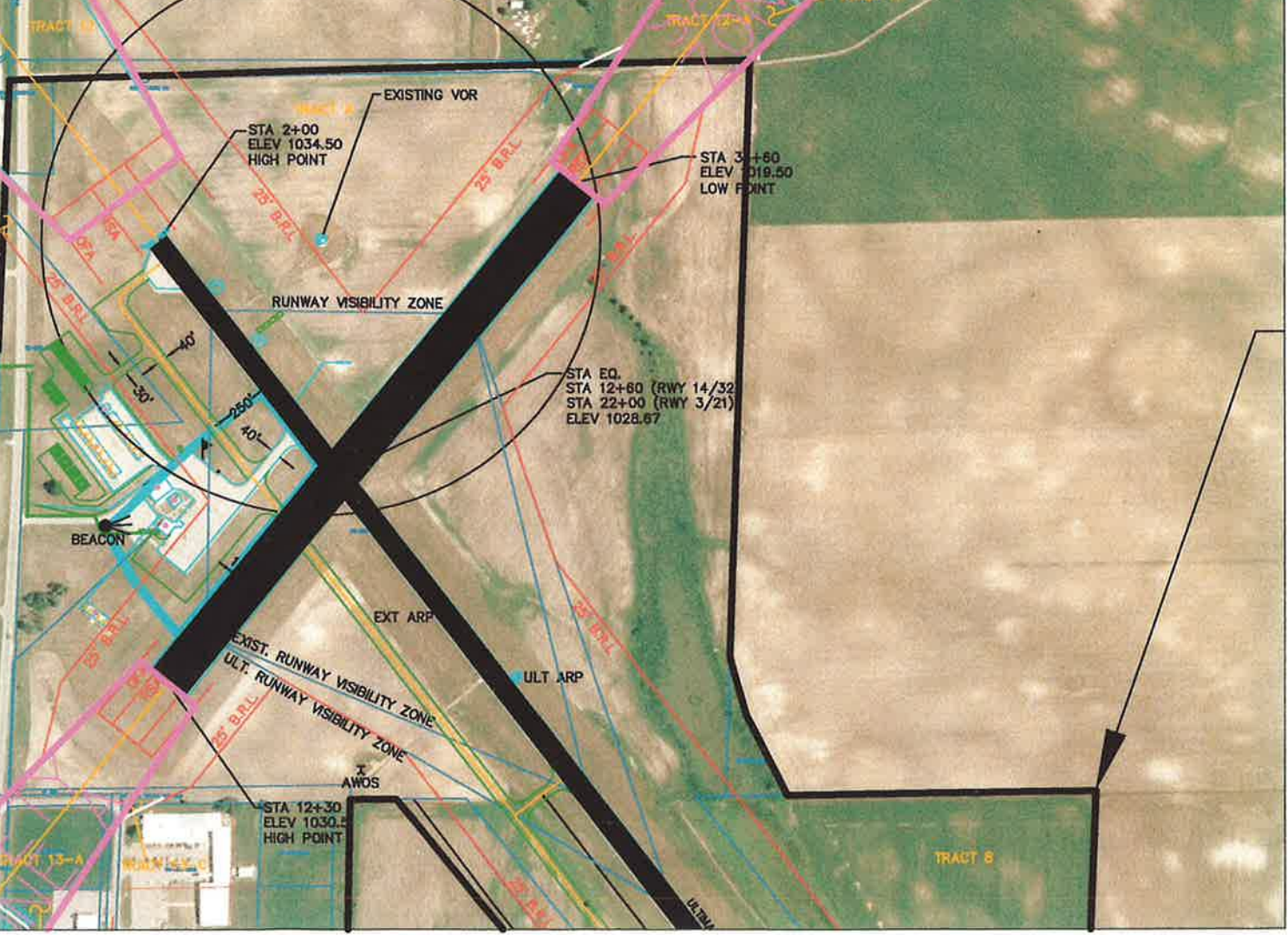


N



Scale: 1" = 600'

1000' VOR CRITICAL AREA



1" = 400'



VOR CRITICAL AREA

EXISTING VOR

TRACT A

STA 2+00
ELEV 1034.50
HIGH POINT

25' B.R.L.

RUNWAY VISIBILITY ZONE

25' B.R.L.

OFA
RSY

STA 35+60
ELEV 1019.50
LOW POINT

25' B.R.L.

STA EQ.
STA 12+60 (RWY 14/32)
STA 22+00 (RWY 3/21)
ELEV 1028.67

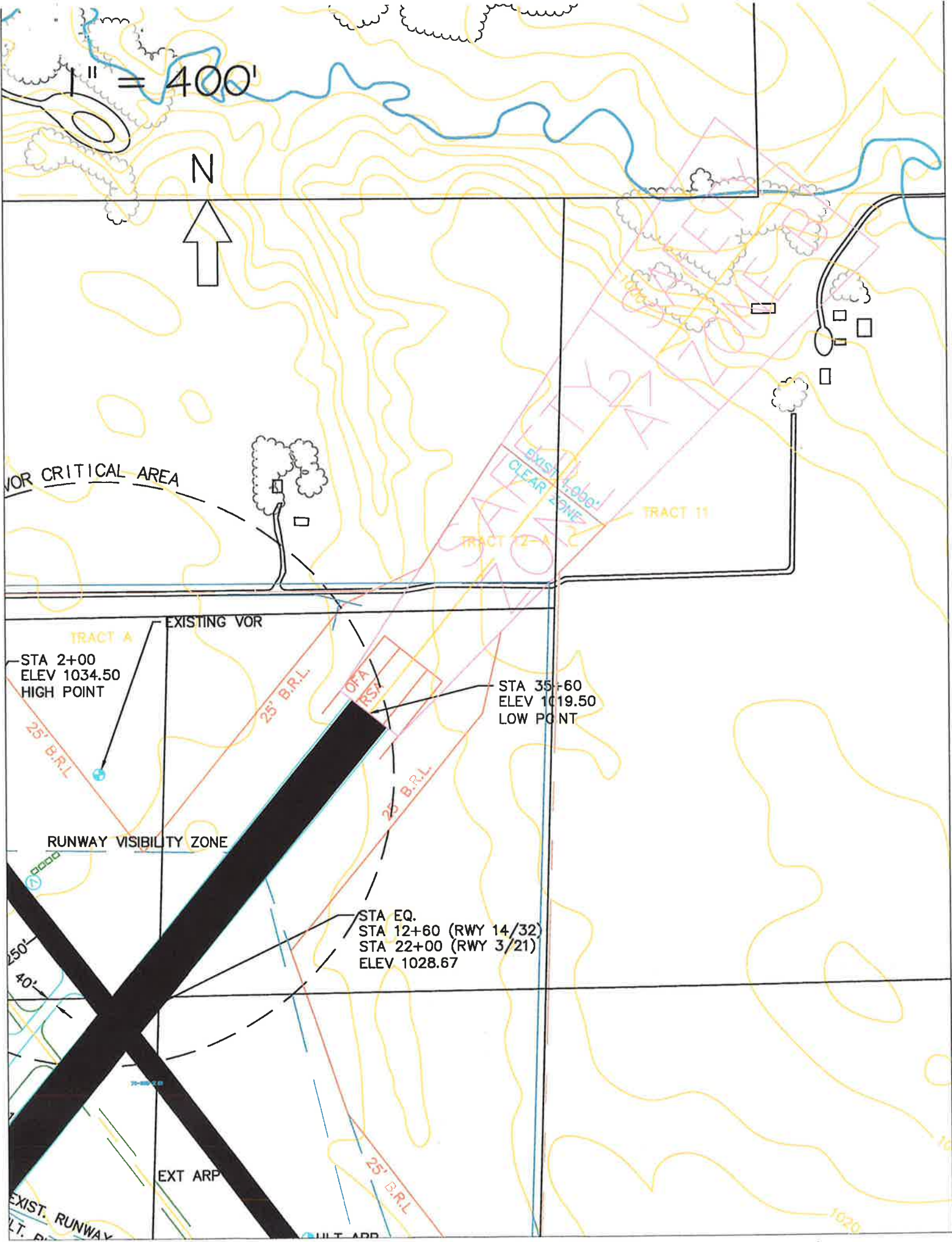
EXT ARP

EXIST. RUNWAY
LT. P.

25' B.R.L.

ULT. ARP

1020



1" = 400'



VOR CRITICAL AREA

TRACT 12-A

TRACT 11

EXISTING VOR

TRACT A

STA 2+00
ELEV 1034.50
HIGH POINT

STA 35+60
ELEV 1019.50
LOW POINT

RUNWAY VISIBILITY ZONE

STA EQ.
STA 12+60 (RWY 14/32)
STA 22+00 (RWY 3/21)
ELEV 1028.67

EXT ARP

EXIST. RUNWAY

